

“Straight Talk”

Customers Choose Straight Walls

Finger joint studs, provide a straighter, stronger, stable vertical use stud than solid sawn.

- Code Accepted NBCC, CSA NLGA (SPS3), IBC, & NDS
- Engineered superior performance studs
- Structural Finger Joints must exhibit strength values more than twice the design value for the grade
- Excellent nailing edge
- Vertical use: Interior & exterior walls within the envelope of the building
- Straight, strong & stable: Avg 5-7 joints in a 9 ft stud
- Cost Effective: Customers report 20%-25% less cull than solid sawn
- Interchangeable with solid sawn studs, same grade, size & species
- Our Premiums are bright and clean

Builders, Homeowners, Architects Strive Towards Green!

- Our studs increase the utilization of valuable forest resources
- Environmentally friendly glue, HRA rated CLSAB, CSA, NLGA SPS 3, ALSC approved
- Green Build - Project managers eligible to apply for points towards green build

Frame Your Next Project with Parallel55 Finger Joint Studs

www.plbrg.com
info@plbrg.com

“Our Commitment”

Customers

We understand that every substandard stud costs you time and money, and potentially your reputation. That is why we manufacture to exacting standards; engineered for superior performance.

Our goal is total customer satisfaction!

Our business is to help you succeed in yours!

People & Communities

Our employees are the strength of our company. We are committed to supporting our employees, their families and the communities in which we operate.

Safety

Safety first at our operations, “safety only takes a few minutes, injuries can last a lifetime”

Patrick Glazier - Co-Owner



**To Purchase Parallel Lumber Groups Western SPF DFirN Finger Joint Studs
Contact us @ info@plbrg.com**



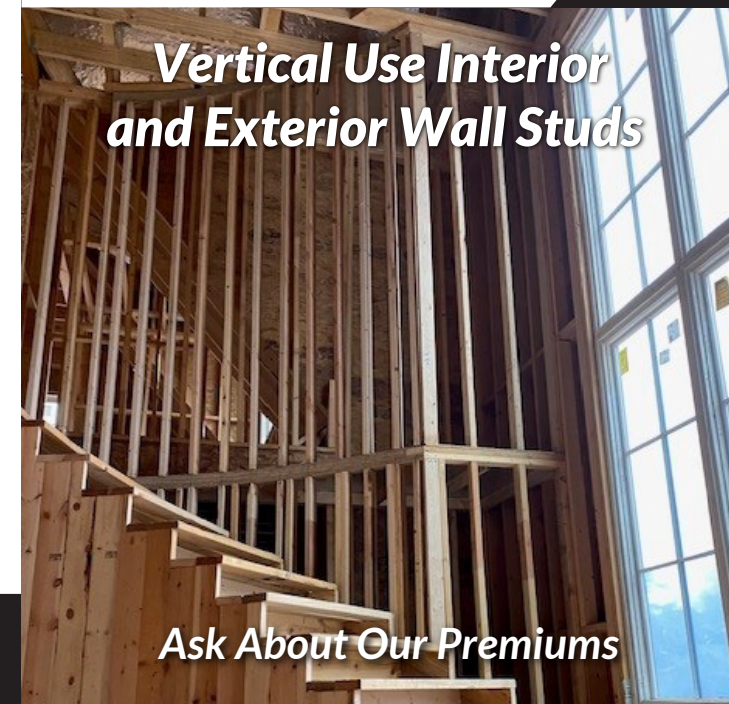
www.plbrg.com



Serving You... Protecting Nature

Parallel55
Western Spruce Pine Fir
#2/Stud Finger Joint Studs

**Engineered for Superior
Performance for over 25 years!**



**Vertical Use Interior
and Exterior Wall Studs**

Ask About Our Premiums



Our Company

Parallel Lumber Group has been manufacturing Finger Joint studs for over 25 years. We exceed the industry

standard for finger joint studs and are proud of our superior performance!

“Our company is committed to practicing increased utilization in all our processes, in concert with a dedication to leadership in forest stewardship and sustainability. This belief just makes good business sense.”

Richard Glazier, Co-Owner

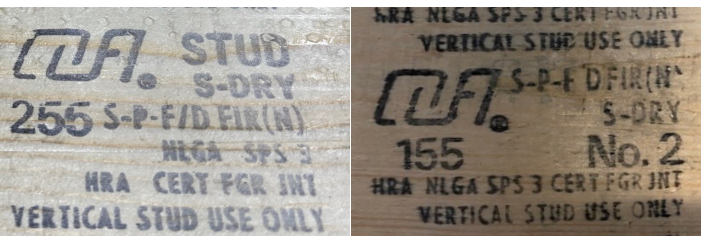
What is Finger Jointing?

Finger Jointed stud lumber is manufactured by taking short blocks of kiln-dried lumber, scanning and remove defect(s), cutting a “Finger” profile into each end, applying the appropriate adhesive, and machine-pressing the pieces together to make a longer piece of lumber.

Optimization: Finger Joint technology allows the softwood lumber industry to recover blocks of premium grade lumber that in the past would have been discarded.

Environment: Product eligibility, Canada Green Building Council.

Certification



Code Acceptance & Quality Assurance

The National Building Code of Canada (NBCC) 2015 - Volume 1 and 2 issued by the Canadian Commission on Building and Fire Codes, National Research Council of Canada permits the interchangeable use of unjointed and fingerjointed lumber that has been produced and grade stamped in accordance with the National Lumber Grades Authority (NLGA). The fingerjointed lumber must be produced and grade stamped in accordance with the following Special Products Standard (SPS): • SPS 1 - Fingerjointed Structural Lumber, or • SPS 3 - Fingerjointed “Vertical Stud Use Only” Lumber to satisfy Part 4 - Structural Design or Part 9 - Housing and Small Buildings of the NBCC.

Section 9.23.10.4.(1) Continuity of Studs:

Wall studs shall be continuous for the full storey height except at openings and shall not be spliced except by finger-jointing with a structural adhesive. (see Note A-9.23.10.4.(1).

A-9.23.10.4.(1) Fingerjointed Lumber:

NLGA, “Standard Grading Rules for Canadian Lumber,” referenced in Article 9.3.2.1., refers to two special product standards, SPS-1, “Fingerjointed Structural Lumber,” and SPS-3, “Fingerjointed “Vertical Stud Use Only” Lumber,” produced by NLGA.

Notes to Table 9.10.3.1-A:

The STC ratings may also be applied to fingerjointed lumber. The fire-resistance ratings are applicable to constructions using fingerjointed lumber that has been manufactured with a heat-resistant adhesive (HRA) in accordance with NLGA special product standard SPS-1, “Fingerjointed Structural Lumber,” or SPS-3, “Fingerjointed “Vertical Stud Use Only” Lumber,” (See also Note A-9.23.10.1.(1).)

For buildings that are engineered under Part 4 of the NBCC, Section 4.3.1.1.(1) “Design Basis for Wood” states: Buildings and their structural members made of wood shall conform to CSA O86, “Engineering Design in Wood”. CSA-O86, Clause 6.2.3 “Finger-jointed lumber” states:

Except as limited in Clause 6.2.3.2, 6.2.3.3, or 6.2.3.4, the design data specified in this Standard apply to finger-jointed and face-glued lumber that has been produced in accordance with NLGA SPS 1, SPS 3, SPS 4, SPS 5, or SPS 6. Note: Finger-jointed and face-glued lumber is produced to specifications that permit the same specified strength and stiffness to be assigned as non-finger-jointed and nonface-glued lumber of the same grade, species, and size.

CSA-O86, Clause 6.2.3.2.2 states that: For SPS 3 “vertical stud use only” lumber to be used in a fire-rated wall assembly, the grade stamp shall include the Heat Resistant Adhesive (HRA) designation.

Quality Assurance

Finger Jointed Lumber is subject to stringent quality control requirements. Regular in-plant testing to assure strong reliable joints is conducted by sampling our product several times each shift. We also use third party verification that follows the NGLA & American Lumber Standards Committee to test for:

- Bond strength and adhesive durability
- Structural Finger Joints must exhibit strength values more than twice the design value for the grade
- Bending strength
- Shear strength
- Joint stability Pressure vacuum treatment

Parallel55

Ask About Our Premiums

Western Finger Joint Studs & #2

| Species | Size | Length | Grade |
|------------|----------------|----------|-------------------|
| SPF DFirN | 2x3 | 84"-144" | Stud & #2 |
| SPF DFirN | 2x4, 2x6 | 84"-144" | Stud & #2 |
| SPF DFirN | 2x4, 2x6 | 84"-144" | Stud & #2 Premium |
| Packaging: | Paper Wrapped | | |
| Shipments: | Truck, or Rail | | |

Straight, Strong, Stable.

Manufactured in Mackenzie and Williams Lake, BC
Corporate Head Office
Prince George, BC

